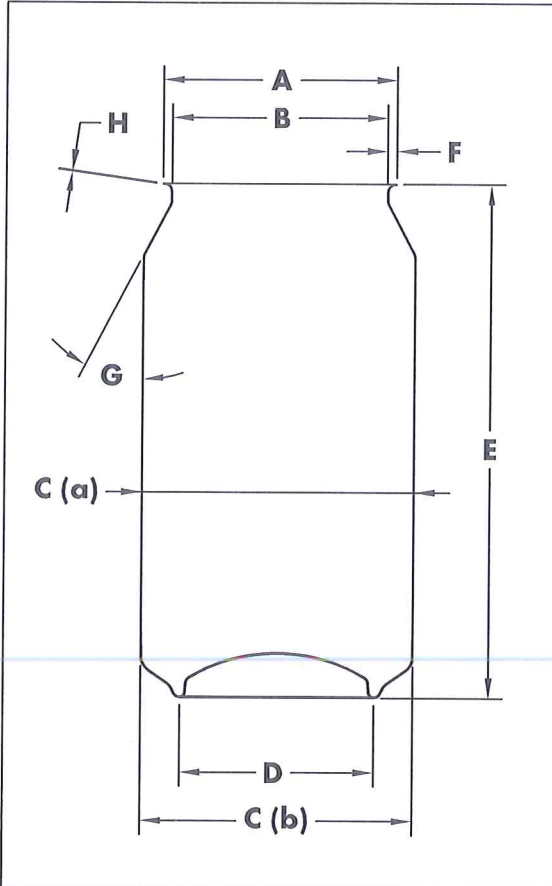




Ball Corporation
Beverage Packaging
Europe

PRODUCT DATA SHEET

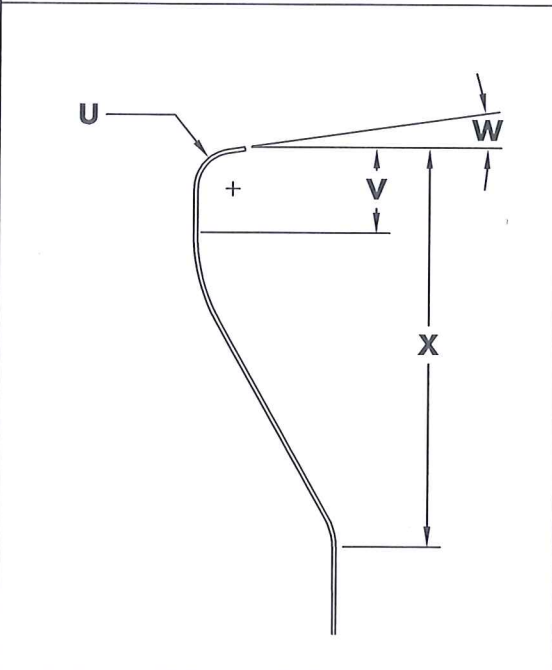


PRODUCT DESCRIPTION

**50 X 53 (200 / 202)
250ML ALUMINIUM 200 NECK
200 BASE - R86f**

ALL DIMENSIONS ARE IN MILLIMETRES AND ARE REFERENCE UNLESS STATED OTHERWISE.

A	Flange Diameter	54.9 MAX
B	Plug Diameter	50.00 +/- 0.30
C	Body Diameter (a)	53.3 MAX
C	Bottom Body Diameter (b)	53.6 MAX
D	Stand Diameter	46.18 REF
E	Open Can Height	134.00 +/- 0.30
F	Flange Width	2.08 +/- 0.25
G	Neck Angle	N/A
U	Flange Radius	1.52 REF
V	Neck Seaming Clearance	3.0 MIN
W	Flange Angle	0 - 12°
X	Shoulder Height	7.5 REF
H	Flange Thickness <i>(To be used in Seam Calculations)</i>	0.150



● Brimful	280ml
● Freeboard	14.1mm NOMINAL
● Axial Load	675N MIN
● Dome reversal	620kPa MIN

Manufacturing Plants: **GELS, NARC, BELG.**

Approved By:
Sector Quality Manager Europe

PDS Number:

C139B

Revision

2

Date

02/10/18